

JTV1 Antibody (Center)
Purified Rabbit Polyclonal Antibody (Pab)
Catalog # AP2861c**Specification**

JTV1 Antibody (Center) - Product Information

Application	WB,E
Primary Accession	Q13155
Reactivity	Human
Host	Rabbit
Clonality	Polyclonal
Isotype	Rabbit IgG
Calculated MW	35349
Antigen Region	156-184

JTV1 Antibody (Center) - Additional Information**Gene ID** 7965**Other Names**

Aminoacyl tRNA synthase complex-interacting multifunctional protein 2, Multisynthase complex auxiliary component p38, Protein JTV-1, AIMP2, JTV1

Target/Specificity

This JTV1 antibody is generated from rabbits immunized with a KLH conjugated synthetic peptide between 156-184 amino acids from the Central region of human JTV1.

Dilution

WB~~1:1000

E~~Use at an assay dependent concentration.

Format

Purified polyclonal antibody supplied in PBS with 0.09% (W/V) sodium azide. This antibody is prepared by Saturated Ammonium Sulfate (SAS) precipitation followed by dialysis against PBS.

Storage

Maintain refrigerated at 2-8°C for up to 2 weeks. For long term storage store at -20°C in small aliquots to prevent freeze-thaw cycles.

Precautions

JTV1 Antibody (Center) is for research use only and not for use in diagnostic or therapeutic procedures.

JTV1 Antibody (Center) - Protein Information**Name** AIMP2**Synonyms** JTV1

Function Required for assembly and stability of the aminoacyl-tRNA synthase complex (PubMed:[19131329](#)). Mediates ubiquitination and degradation of FUBP1, a transcriptional activator of MYC, leading to MYC down-regulation which is required for aveolar type II cell differentiation. Blocks MDM2-mediated ubiquitination and degradation of p53/TP53. Functions as a proapoptotic factor.

Cellular Location

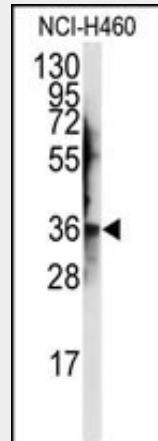
Cytoplasm, cytosol. Nucleus {ECO:0000250|UniProtKB:Q8R010}. Note=Following DNA damage, dissociates from the aminoacyl-tRNA synthase complex and translocates from the cytoplasm to the nucleus. {ECO:0000250|UniProtKB:Q8R010}

JTV1 Antibody (Center) - Protocols

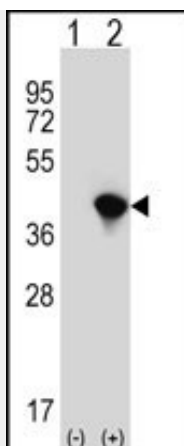
Provided below are standard protocols that you may find useful for product applications.

- [Western Blot](#)
- [Blocking Peptides](#)
- [Dot Blot](#)
- [Immunohistochemistry](#)
- [Immunofluorescence](#)
- [Immunoprecipitation](#)
- [Flow Cytometry](#)
- [Cell Culture](#)

JTV1 Antibody (Center) - Images



Western blot analysis of anti-JTV1 Antibody (Center) (Cat.#AP2861c) in NCI-H460 cell line lysates (35ug/lane).JTV1(arrow) was detected using the purified Pab.



Western blot analysis of JTV1 (arrow) using rabbit polyclonal JTV1 Antibody (Center) (Cat.#AP2861c). 293 cell lysates (2 ug/lane) either nontransfected (Lane 1) or transiently transfected (Lane 2) with the JTV1 gene.

JTV1 Antibody (Center) - Background

JTV1 is probable core protein of the multisynthetase complex that serves as a template for the assembly of the supramolecular structure. This protein Mediates ubiquitination of FUBP1 and its degradation by the proteasome.

JTV1 Antibody (Center) - References

Nicolaides N.C., Kinzler K.W., Vogelstein B. Genomics 29:329-334(1995)
Kim M.J., Park B.-J., Kang Y.-S., Kim H.J., Park J.-H., Kang J.W., Lee S.W.,
Nat. Genet. 34:330-336(2003)